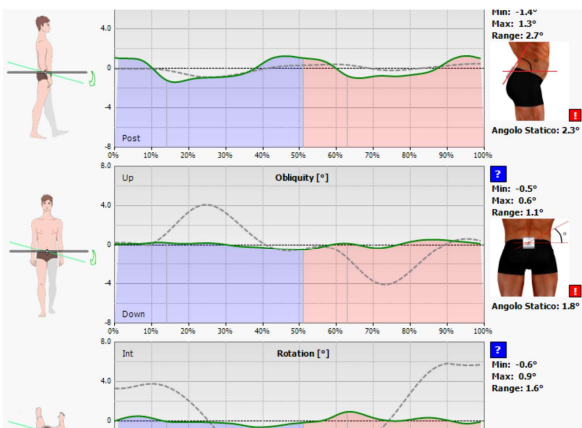
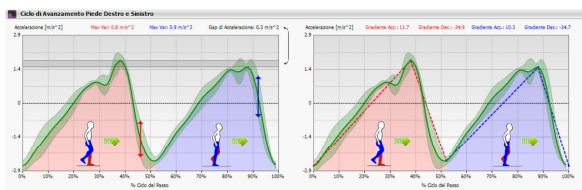


WIVA® SCIENCE + PROTOCOL WALK (Gait Analysis) + Run Evalaution (Wiva Run) Analisi del cammino)



WALK:

The Wiva® Walk system uses a Wiva Science inertial sensor connected via Bluetooth to a computer / smartphone or tablet (through the new BIOMECH® STUDIO app) and allows to determine both time-space parameters and the rotations of the HIP.

The sensor is positioned on the patient's waist with a special belt that does not influence the execution of the motor gesture: the patient can walk free following the protocol.

This allows an accurate and scientific measurement. At the end of the walk analysis, an automatic report is displayed with the parameters calculated during the test. These indices are the result of 10 years of research and have been validated in important clinical centers. The analysis can be repeated several times in sequence.

You can then change the patient's condition (such as using orthoses or walking aids) and checking the effect of the changes accordingly in real time.

It is also possible to verify the evolution of a therapeutic treatment by checking the normalization of the measured parameters.

This test can be performed both outdoors and indoors, on adult patients and on pediatric subjects. It allows to carry out a complete analysis thanks to the numerous information it provides among others

It is also possible to verify the evolution of a therapeutic treatment by checking the normalization of the measured parameters.

This test can be performed both outdoors and indoors, on adult patients and on pediatric subjects. It allows to carry out a complete analysis thanks to the numerous information it provides among others

- Speed: main indicator of problems related to the journey
- Acceleration and variability of the pitch to check the repeatability of the acquired steps
- Angles and motor ranges of the pelvis dynamic posture during the walk